

**Saughall and Shotwick Park Parish Council  
Highways Group**

**Raised island build out scheme proposals  
August 2021**

**Image 01 – Build-out adjacent Golden Jubilee Park, Long Lane**

Somewhat of a gateway effect to not only reduce speed but also to improve pedestrian crossing to the park, both reducing the crossing distance and providing a safer area for pram/buggy crossing.



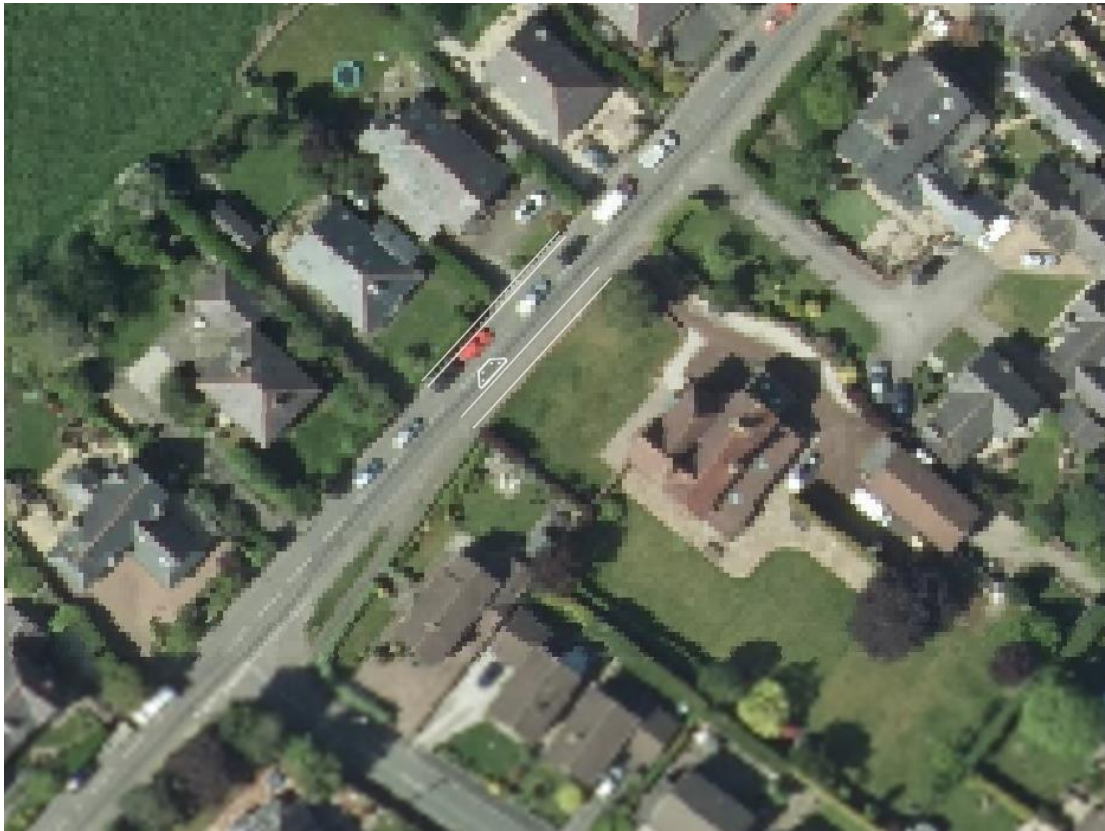
**Image 02 – Build-out adjacent to Ainsworth House, Seahill Road**

To slow traffic entering the village along Sealand Road (NE bound)



**Image 03 – Build-out adjacent to The Croft, Seahill Road**

To slow traffic along Seahill Road (SW bound)



For the avoidance of doubt we are thinking something similar to the one on Mill Lane, Upton.



